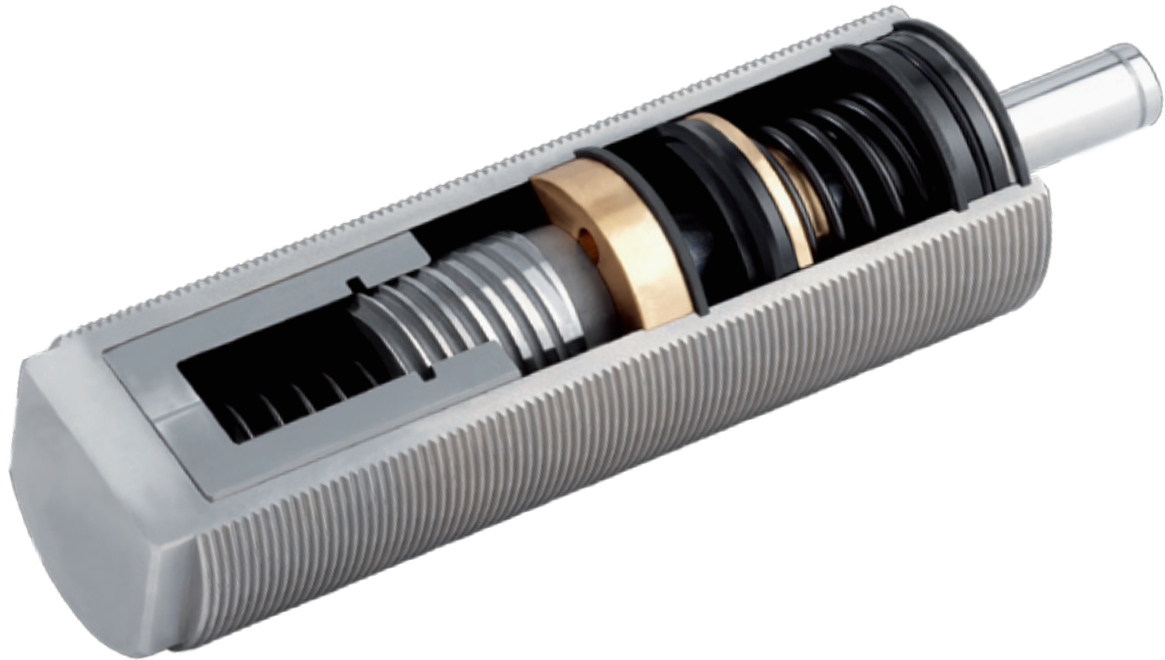


SHOCK ABSORBER

PowerStop[®]

ZIMMER[®]
TECHNISCHE WERKSTÄTTEN



MORE DURABLE AT CONSTANT COSTS!

Industrial shock absorber for the employment under constant load. High energy consumption, small design, durability and the possibility of insertion in pneumatic pressure chamber distinguish the **PowerStop**[®] compared to competitive shock absorber.

SPECIAL CHARACTERISTICS:

- maximal number of cycles because of the spiral groove
- Smooth braking
- Higher power consumption by max. capacity
- casing is made of stainless steel
- Assembly in pneumatic pressure chamber possible (PowerStop)
- Higher operation safety and longer service life by oil reserve (PowerStop).

Fon: +49.7844.9138-0
www.zimmer-gmbh.com

EIN UNTERNEHMEN DER

ZIMMER[®]
G R O U P 